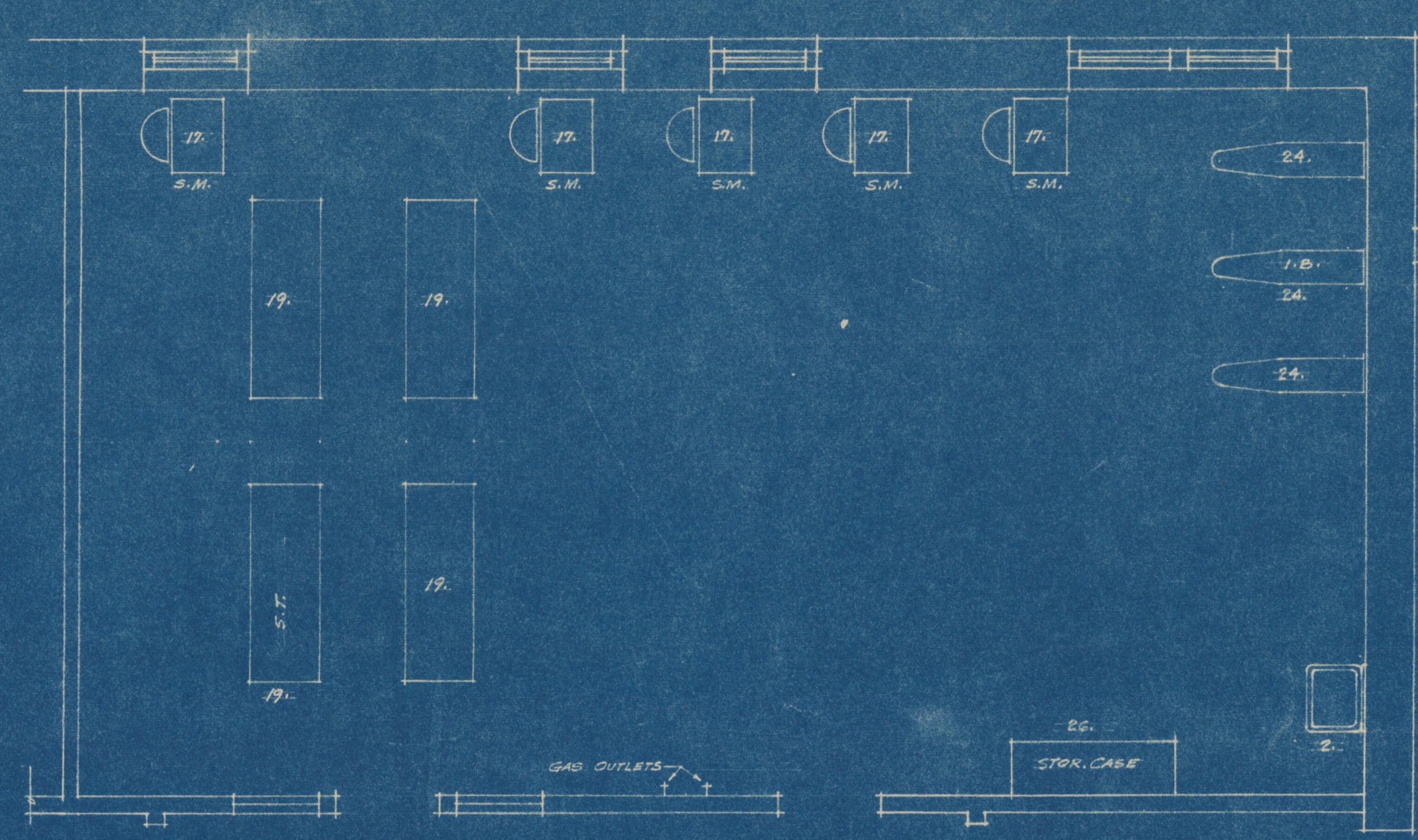
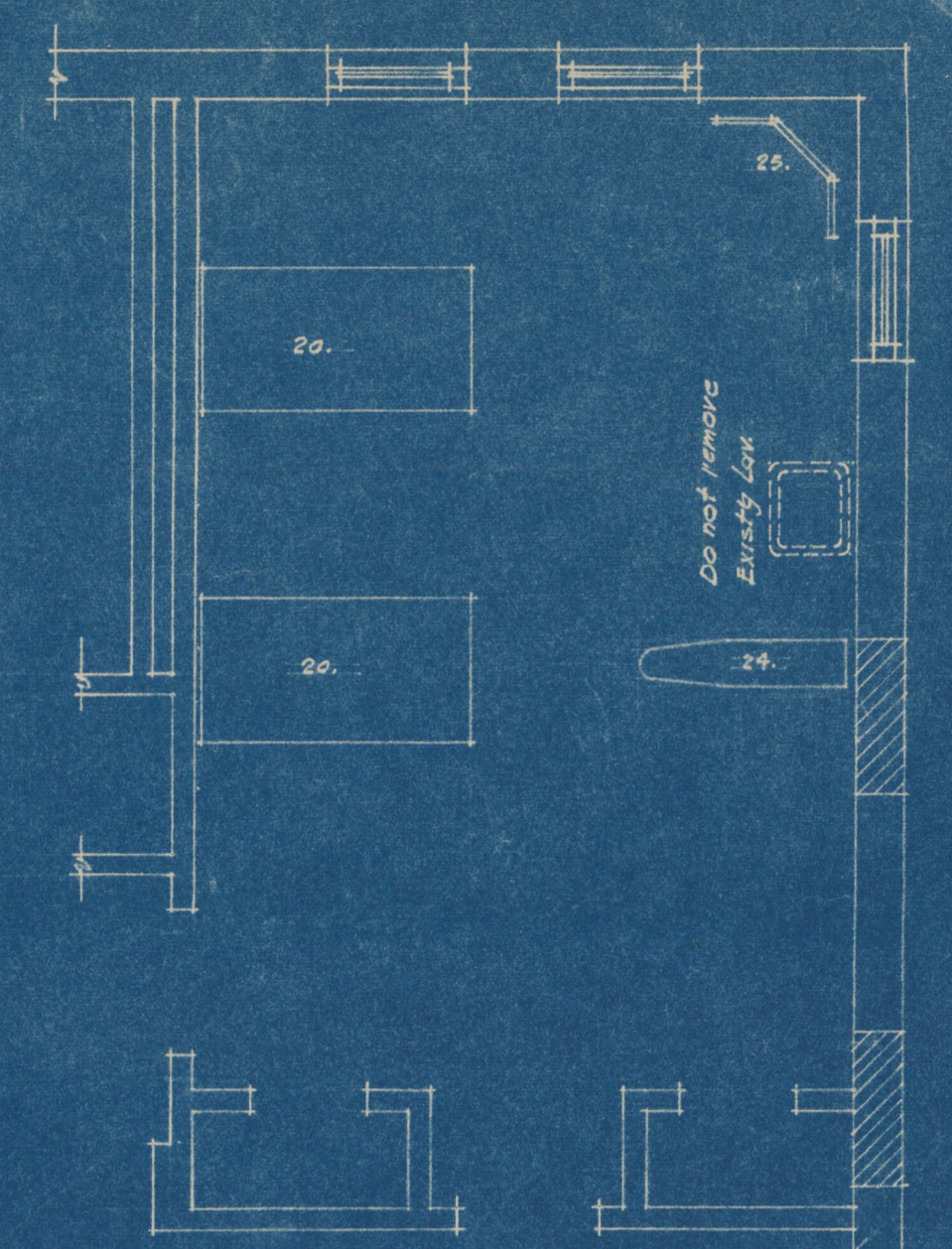


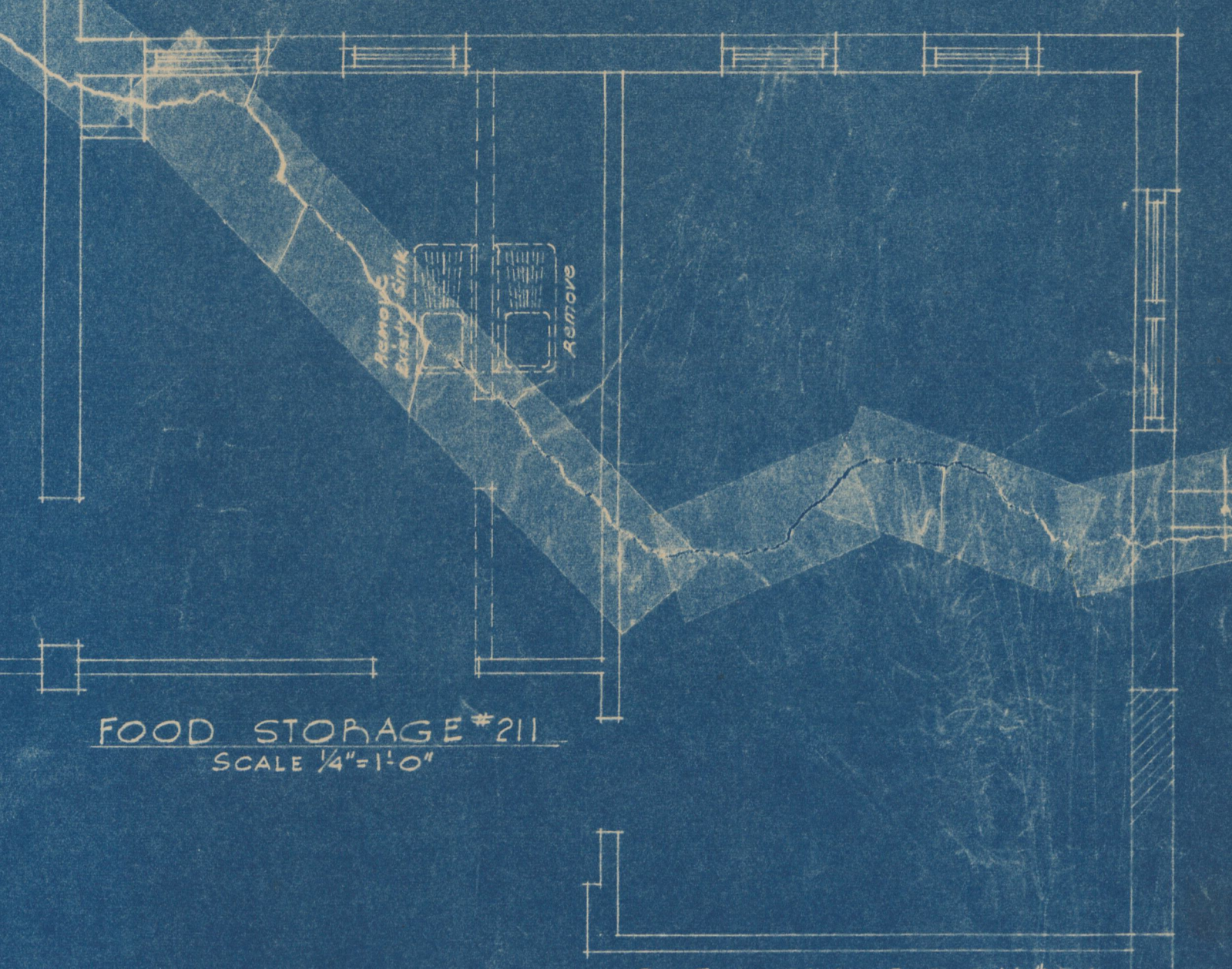
HOUSING LABORATORY #1  
SCALE 1/4"=1'-0"



TEXTILE LABORATORY  
SCALE 1/4"=1'-0"

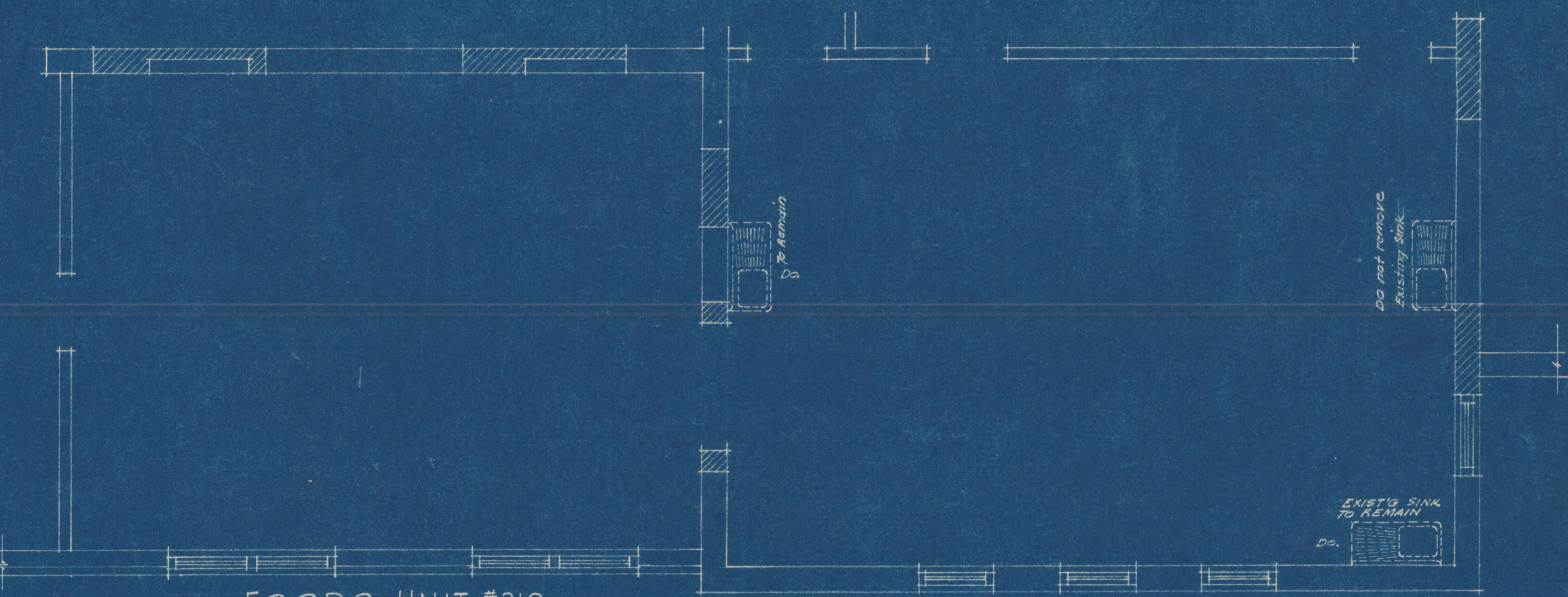


PRESSING & FITTING RM. #117  
SCALE 1/4"=1'-0"



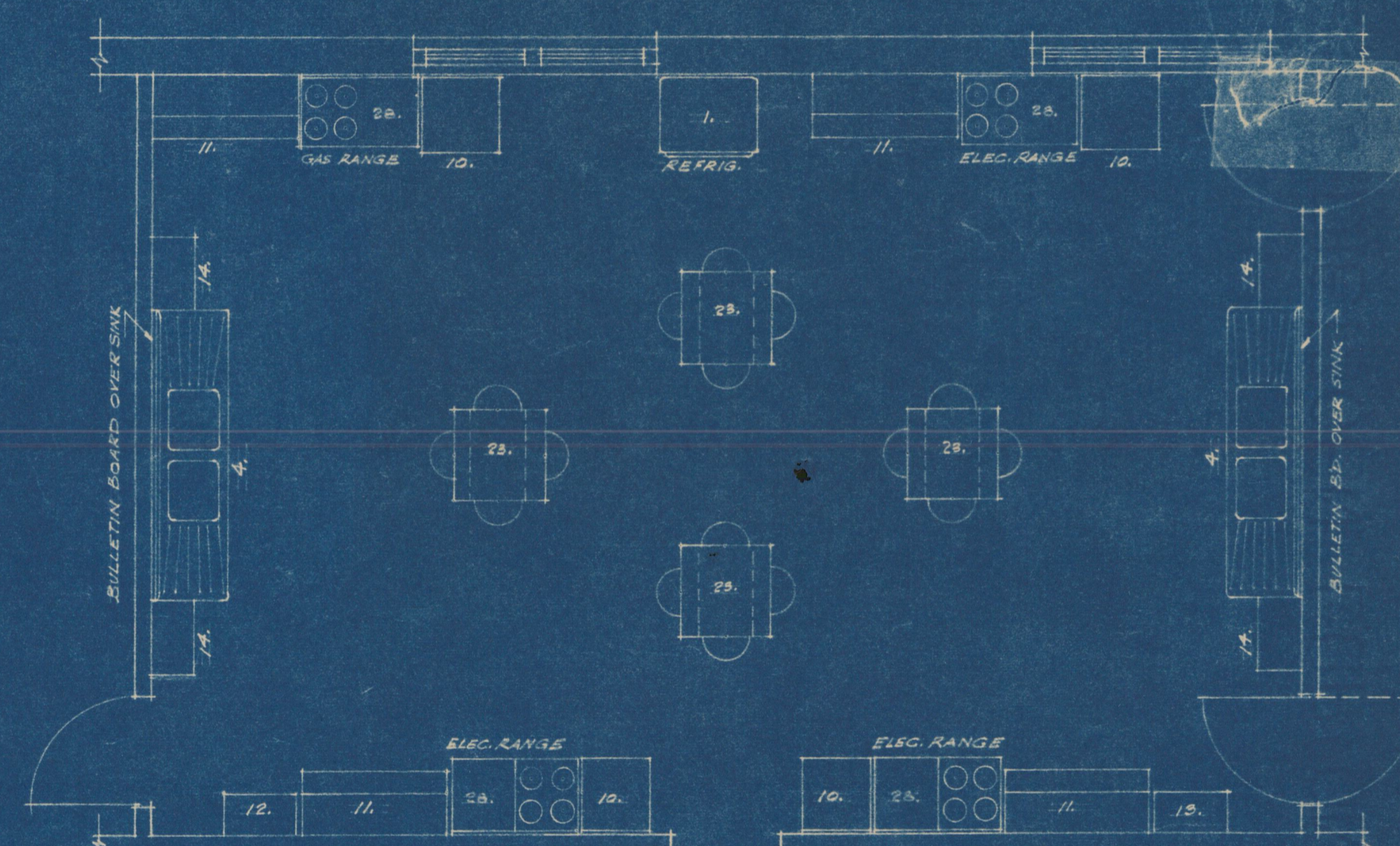
FOOD STORAGE #211  
SCALE 1/4"=1'-0"

DRESSING ROOM #212  
SCALE 1/4"=1'-0"

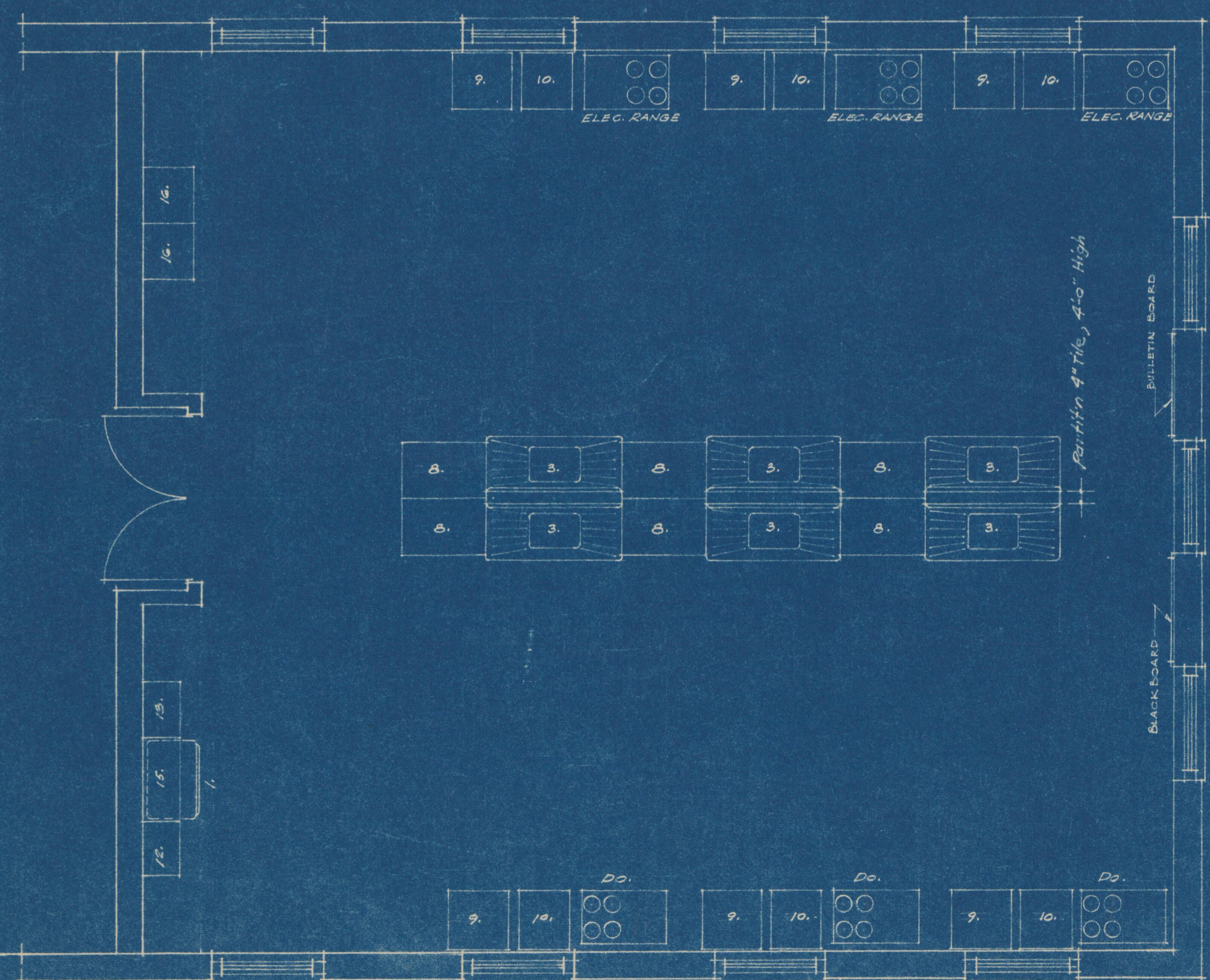


FOODS UNIT #212  
SCALE 1/4"=1'-0"

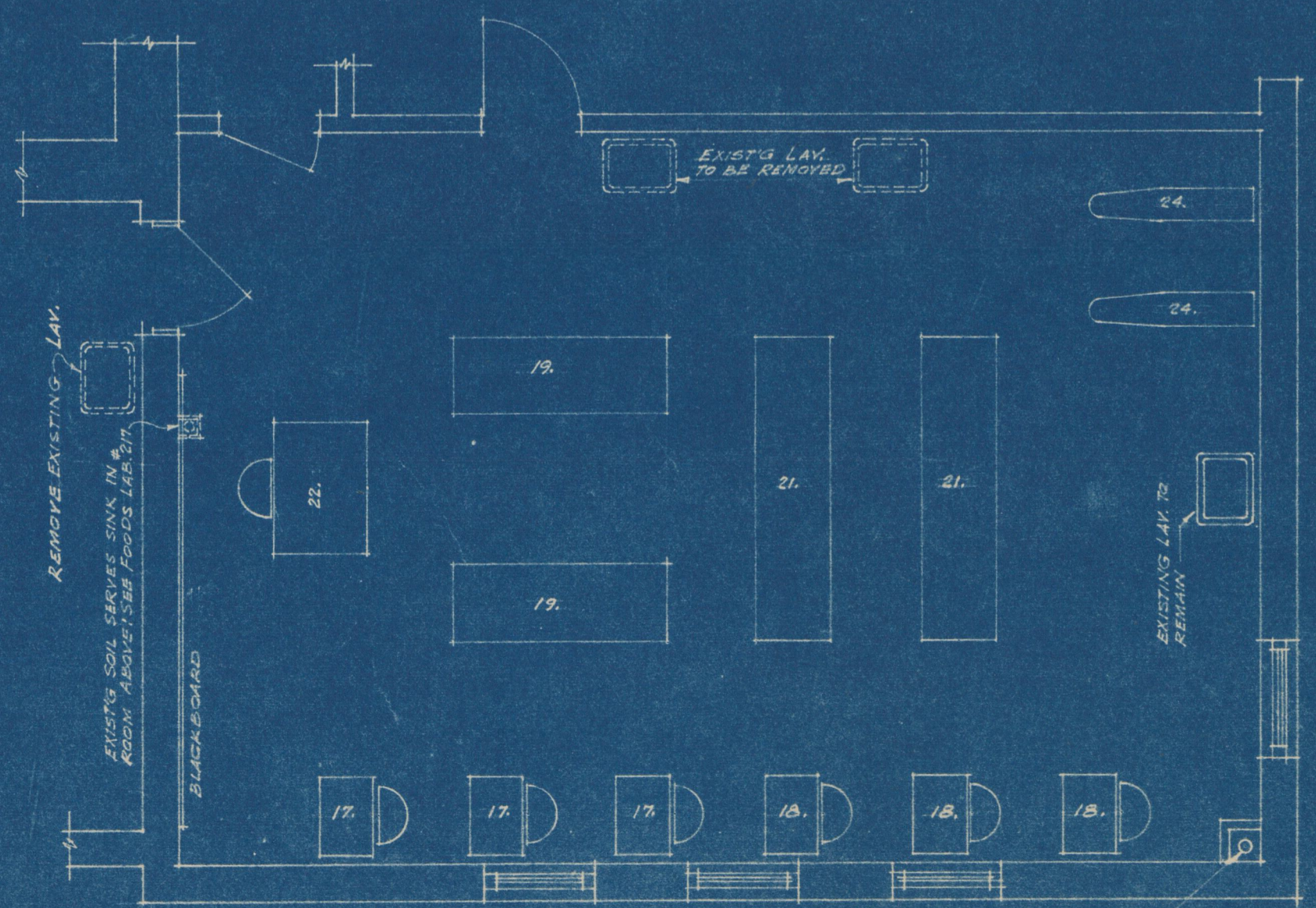
FOODS LABORATORY #217  
SCALE 1/4"=1'-0"



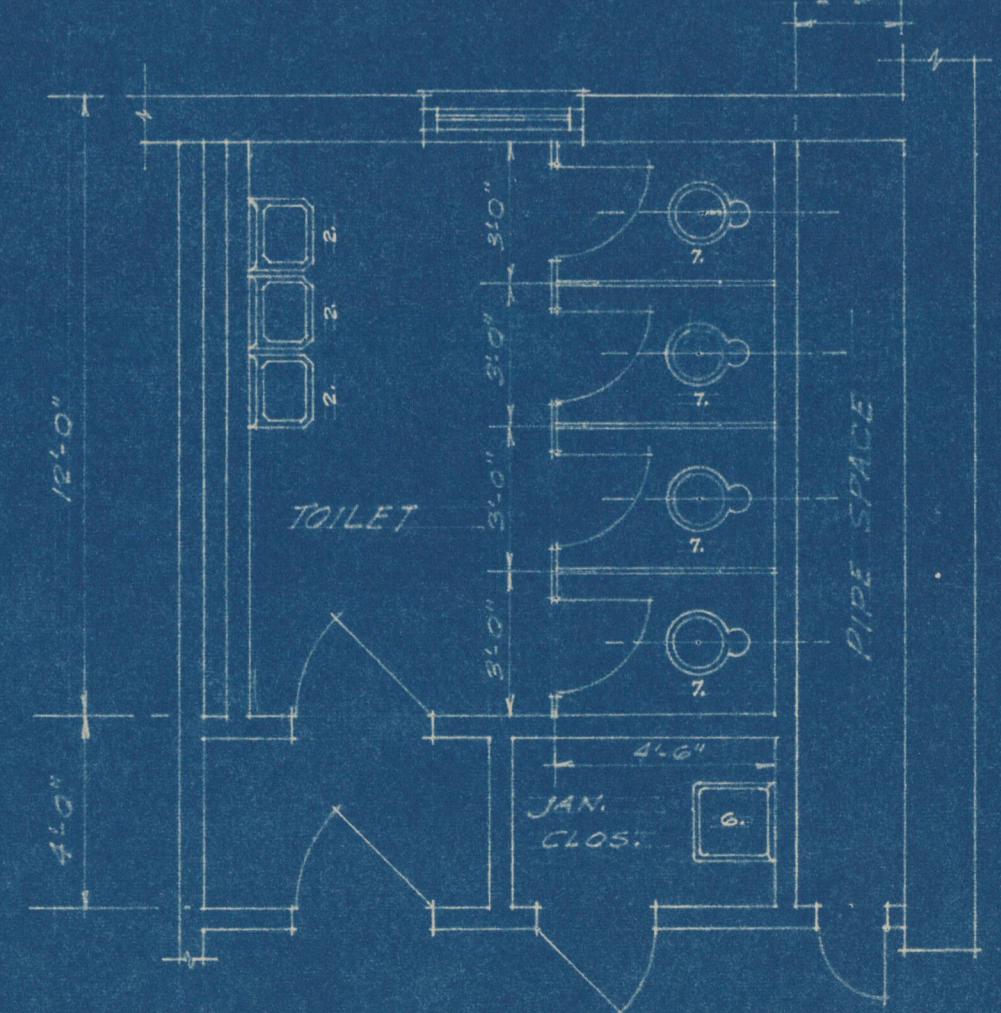
FOODS LABORATORY #209  
SCALE 1/4"=1'-0"



FOODS LABORATORY #216  
SCALE 1/4"=1'-0"



CLOTHING LABORATORY #211  
SCALE 1/4"=1'-0"

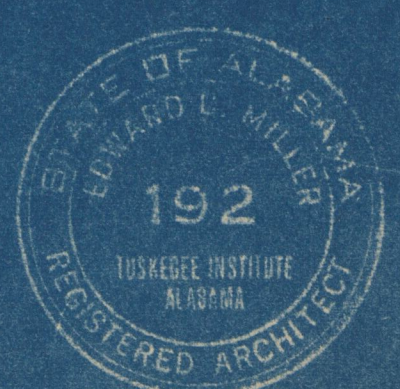


TYPICAL TOILET PLAN  
SCALE 1/4"=1'-0"

KEY TO SYMBOLS USED

- 1. REFRIGERATOR
- 2. LAVATORY
- 3. DOUBLE DRAIN'D SINK SINGLE COMP.
- 4. DOUBLE DRAIN'D SINK DOUBLE COMP.
- 5. SINK WITH DRAINBOARD
- 6. SERVICE SINK
- 7. WATER CLOSET
- 8. CABINET 36" HIGH X 36" LONG
- 9. CABINET 36" HIGH X 24" LONG
- 10. WORK TABLE
- 11. CABINET (WALL & BASE UNITS)
- 12. BROOM & MOP CLOSET
- 13. UTILITY CABINET
- 14. CHINA CABINET
- 15. WALL CAB. BRIDGING ITEMS 12 AND 13
- 16. WARDROBE
- 17. ELECTRIC SEWING MACH.
- 18. NON-ELECTRIC SEWING MACH.
- 19. SEWING TABLE
- 20. SEWING TABLE
- 21. OLD EQUIPMENT
- 22. TEACHER'S DESK AND CHAIR
- 23. DINING SET
- 24. IRONING BOARD
- 25. THREE-MIRROR MIRROR
- 26. STORAGE CASE
- 27. FLOOR DRAIN
- 28. RELOCATED RANGE

NOTE: EQUIPMENT SHOWN ON PLANS TO BE FURNISHED AND INSTALLED ONLY BY THIS CONTRACTOR IF SPECIFICALLY STATED OR SHOWN IN EQUIPMENT SCHEDULE OF SPECIFICATIONS.



PROPOSED ADDITIONS TO HOME ECONOMICS BUILD'G TUSKEGEE INSTITUTE, ALABAMA		
EQUIPMENT & PLUMB'G FIXTURE LAYOUT		
EDWARD C. MILLER, ARCHITECT TUSKEGEE INSTITUTE, ALA.		
REVISIONS BY	DATE	
DRAWN BY:	APPROVED BY: <i>E.C.M.</i>	DRAWING NO.
TRACED BY:	DATE: <i>Oct 23, 1941</i>	<b>C1</b>
CHK'D BY:		