

Mississippi's fastest-growing city during the decade of the 1950's continues to grow rapidly.

*Miss. News + Views*, June, 1967  
p. 23

# CLINTON

## Industry, Population Grow

Clinton has been described by Edward Blake, author and historian, as "staunch and courageous in its deeply-rooted religious and academic atmosphere, progressive, beautiful, growing . . ."

And growing Clinton is! With a phenomenal 52.5 percent population increase during the 1950 to 1960 decade, Clinton ranked as Mississippi's fastest-growing city and at the top of growing cities in the nation. It's close proximity to the many metropolitan advantages of Jackson and its equitable tax structure and many advantages to business, industry and new residents have greatly accelerated the growth rate, which promises to soon push the population to 10,000 persons.

Best of all, perhaps, is the neat, orderly and attractive pattern of growth which Clinton has enjoyed. A beautiful city with a neat downtown area, new and orderly shopping centers, mushrooming subdivisions of lovely homes, and new apartment complexes being constructed, Clinton has always enjoyed excellent municipal services, with periodic expansions of water, sewage, fire, police and other departments to provide present and future needs of a growing city. Through its greatest period of growth, Clinton has enjoyed excellent financial condition and an extremely low bonded indebtedness.

Clinton residents are outstanding in themselves, enjoying the state's second highest average per family income, \$5,800, and average grades of schooling completed by residents is 13.5. Clinton residents enjoy the advantages of being able to attend kindergarten through graduate school right in the city in an excellent educational system.

Located about a mile northwest of Clinton is a 1,000 acre industrial park which is operated as a private corporation with a group of Clinton citizens as stockholders. The property has 2½ miles of railroad frontage and an arterial highway running its entire length, affording easy exit from the park in all directions and bypassing the heavy traffic areas of Jackson. Electricity is furnished by Mississippi Power and Light Company and Capital Electric Power Association. Natural gas is provided by Mississippi Valley Gas Company.

Private financing is available to bonafide industrial prospects, as well as Industrial Revenue Bonds issued

by the Supervisors District of the City of Clinton. Protective covenants assure the orderly development of Clinton Industrial Park.

Five prospering industrial enterprises are already located on excellent sites within the park. Because of its strategic location and other excellent advantages, negotiations are underway with other prospects for sites in this excellent industrial location.

# CLINTON

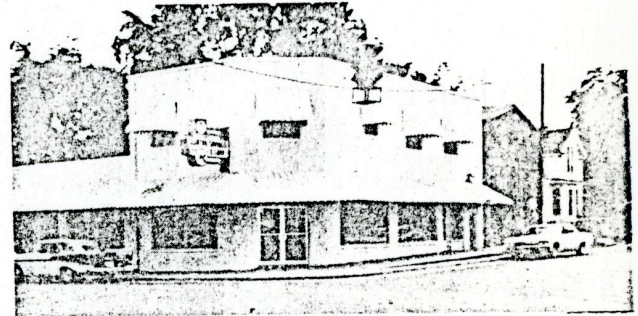
PROUD TO BE THE HOME OF MISSISSIPPI COLLEGE  
Since 1826, Clinton has been a noted educational center. Today it offers all the advantages of a metropolitan center (nearby Jackson), plus the convenience of a smaller city. We invite responsible business and industry to become a part of our planned pattern of growth. ADDRESS INQUIRIES TO:

## CITY OF CLINTON

DR. A. E. WOOD, Mayor

### ALDERMEN:

Charles G. Blass	E. O. Bufkin	
Paul N. Jorgensen	Charles C. Landrum	Hubert G. Street
Joe H. Price, City Clerk & Assessor	Dave Callahan, Fire Chief	
Shelton Bounds, Chief of Police	John Gaddis, City Engineer	
John Fox III, City Attorney		



## "GROWING WITH A GREATER CLINTON"

- All savings Accounts Insured Up to \$10,000 by American Savings Insurance Corporation
- 4.80% Dividend Compounded Semi-Annually On Passbook Savings Accounts
- 5% On One Year Savings Accounts

HOME OWNED — HOME OPERATED

# CLINTON SAVINGS & LOAN ASSOCIATION

201 W. Leake St.

P. O. Box 5

Clinton, Miss.

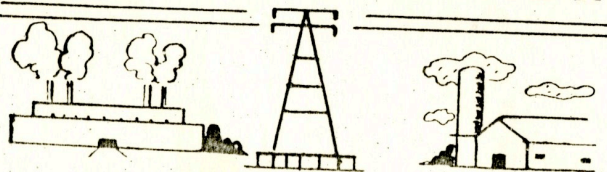


City Clerk Joe H. Price (left) and Dr. A. E. Wood, long-time Mayor of Clinton, discuss the outstanding growth and progress that the city is experiencing in front of the Clinton City Hall building.



Construction has been completed on Reliance Universal's new plant in the Clinton Industrial Park. Products will include paints, varnishes and coatings for other major Mississippi manufacturers.

## CAPITAL ELECTRIC POWER ASSOCIATION



Operating in Hinds, Warren, Copiah, Rankin,  
Madison, Claiborne and Leake Counties  
Telephone 924-6242 Post Office Box 247  
CLINTON, MISSISSIPPI

## MISSISSIPPI COLLEGE GROWS

### Second Ten Year Plan Projected

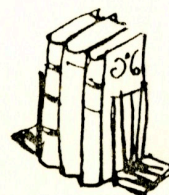
A new master plan for the Mississippi College campus, with projected expansion through 1977, has been adopted by the Board of Trustees. Prepared by Olmsted Associates, Inc., Landscape Architects, of Brookline, Mass., the plan will give the college maximum use of the land available and, when fully implemented, will allow the college to boast of one of the finest physical plants in the South.

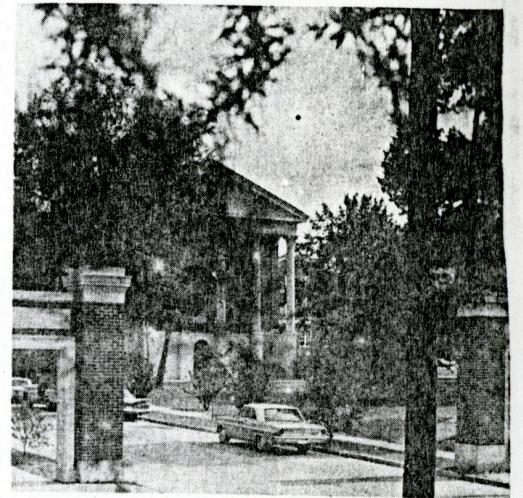
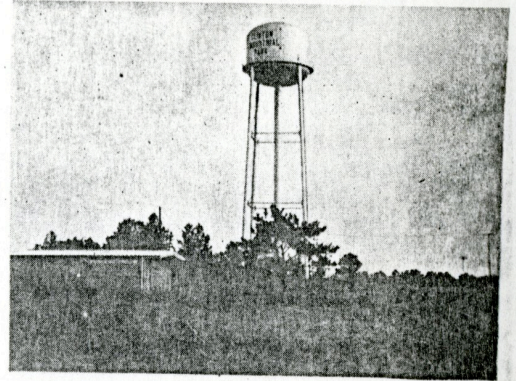
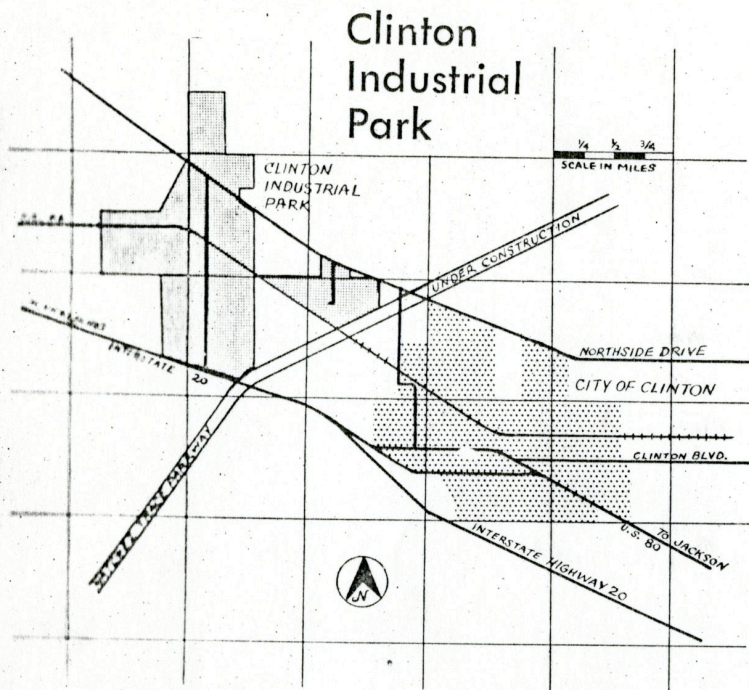
The new plan calls for the relocation of athletic facilities to the western side of the campus. Included in that complex would be a new football field, a coliseum for basketball, a baseball diamond and practice football field, and an olympic size swimming pool. The present stadium would be used for physical activity classes, while the baseball diamond would be converted to a parking area. South of the complex would be a golf driving range and a practice green.

Three new residence halls — two for men and one for women — are also in the new plan, plus six multi-apartment houses for married students. The latter units would be constructed on the old Hillman College campus. The men's residences are planned east of Whittington Hall, while the women's facility will be located on the site of the president's old home.

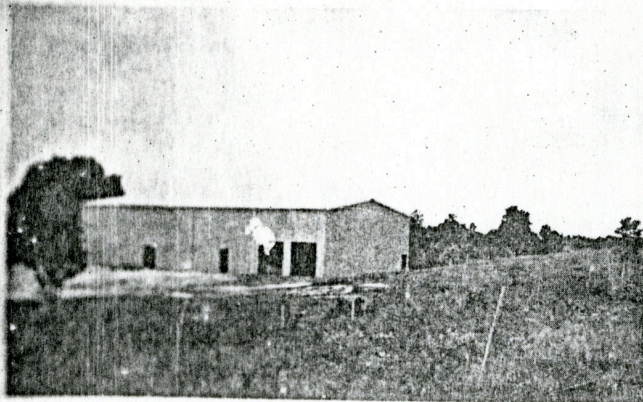
Other new buildings in the adopted plan are a home economics building, three general classroom buildings, a women's gymnasium, a maintenance building, and an extension of the current library. Additional parking areas are also included.

The new master plan replaces a similar drawing prepared by Olmsted Associates, Inc., in 1962, and allows accommodations for a student body numbering 3,000.

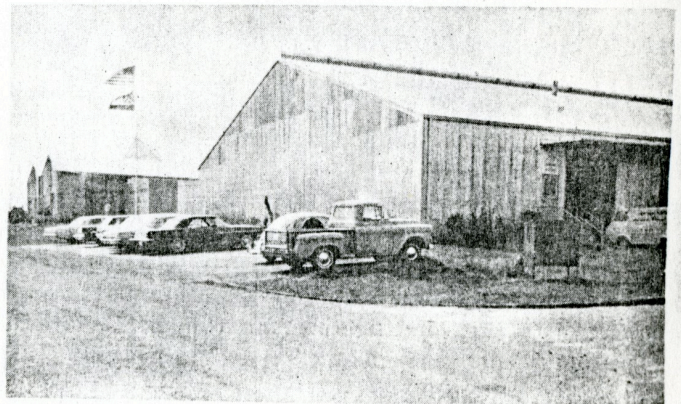




Above: map of the excellent location of Clinton's Industrial Park. Above right: plant of Guaranty Chemical Corporation, manufacturer and distributor of service chemicals for sanitation, weed killing and other uses, next to the park's 150,000 gallon water tower. Right: historic chapel on the Miss. College campus.



Nearing completion in the Clinton Industrial Park is the plant of Jackson Poly Films, which will manufacture polyethylene tubing. Other plants are located in Brentwood, Missouri, and Cleveland, Ohio.



Southern Carton Corporation, division of Consolidated Packaging Corp., was the park's first industry. It's 60,000 square foot plant was a model construction project.

**1000 ACRES AVAILABLE FOR INDUSTRY**

ALL UTILITIES — RAIL, HIGHWAY, AND AIR FACILITIES  
CLOSE TO THE JACKSON LABOR MARKET

**CLINTON INDUSTRIAL PARK**

PHONE 924-6323                      P. O. BOX 172                      CLINTON, MISS.

FOR ADDITIONAL INFORMATION WRITE: WILLIAM H. HEWITT, President, OR GLADSTONE E. WILLIAMS, Secretary