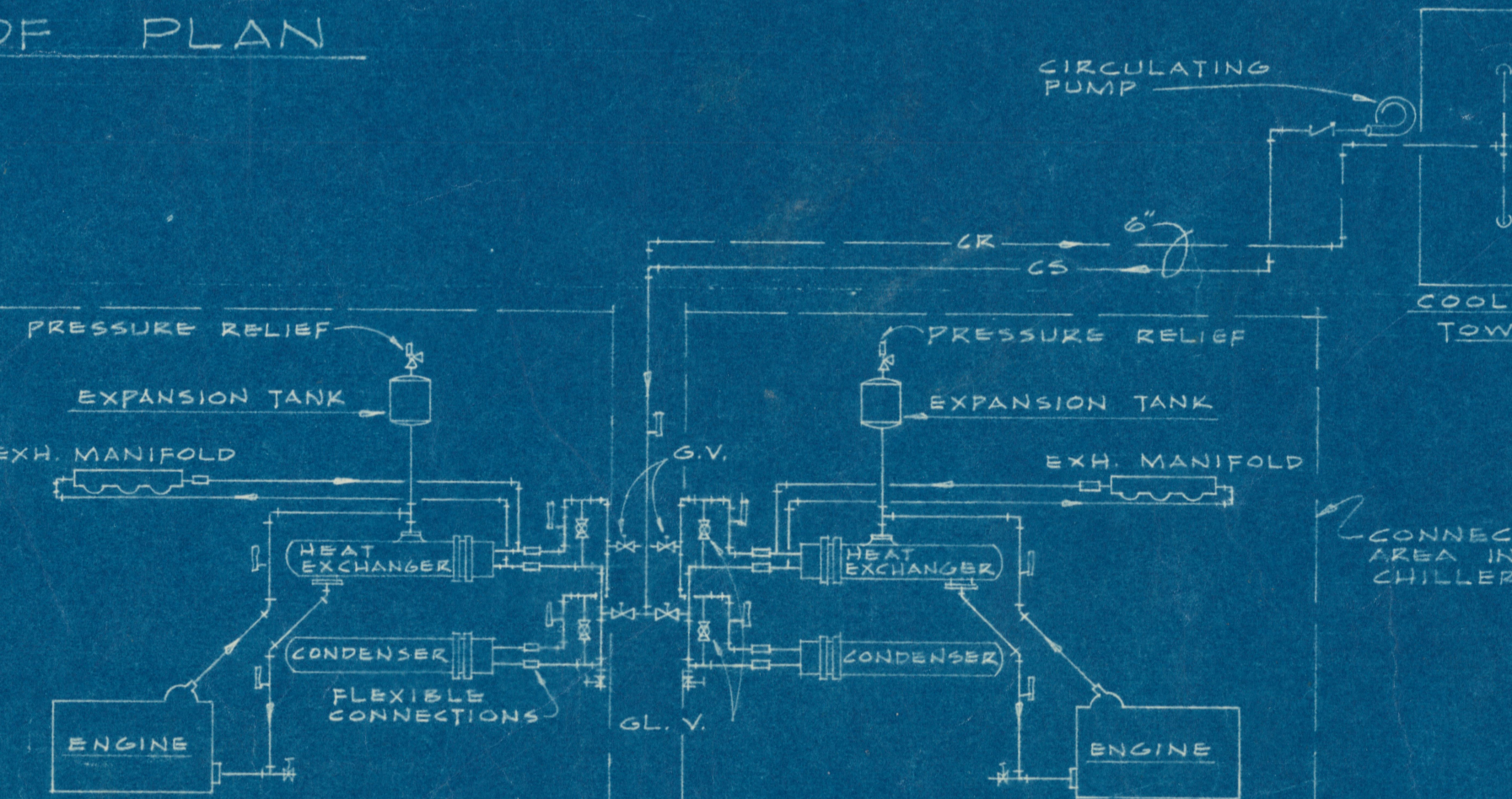
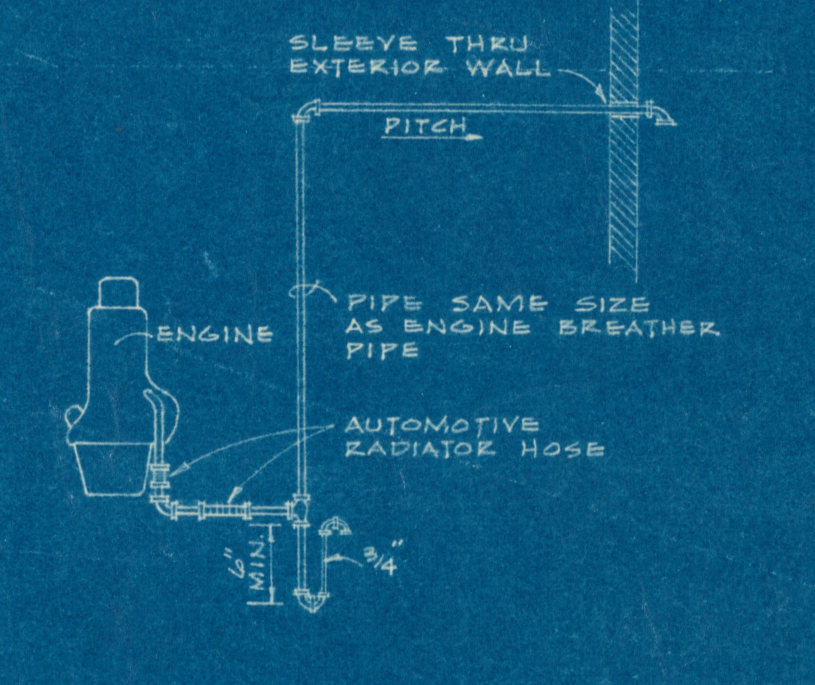
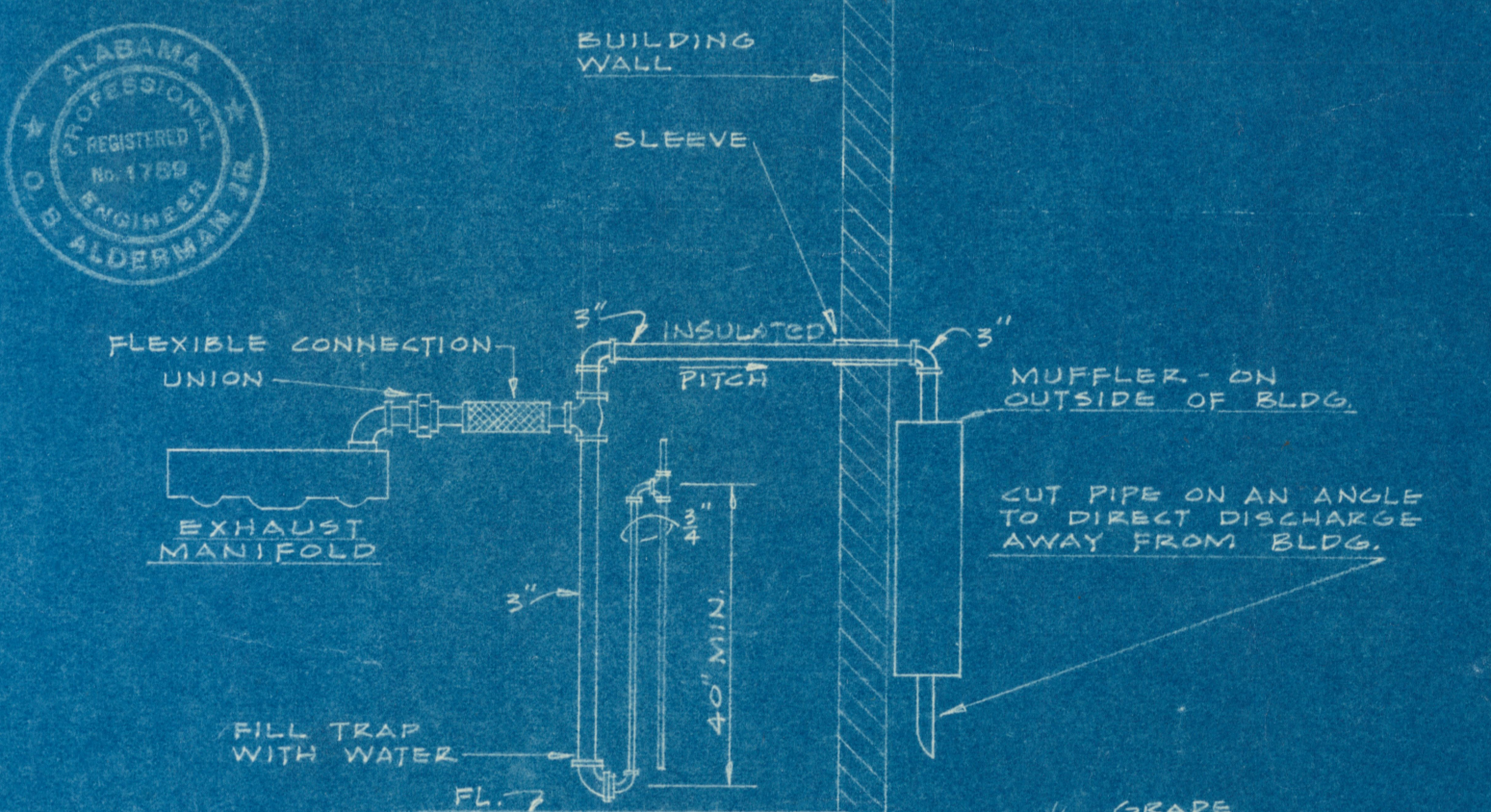
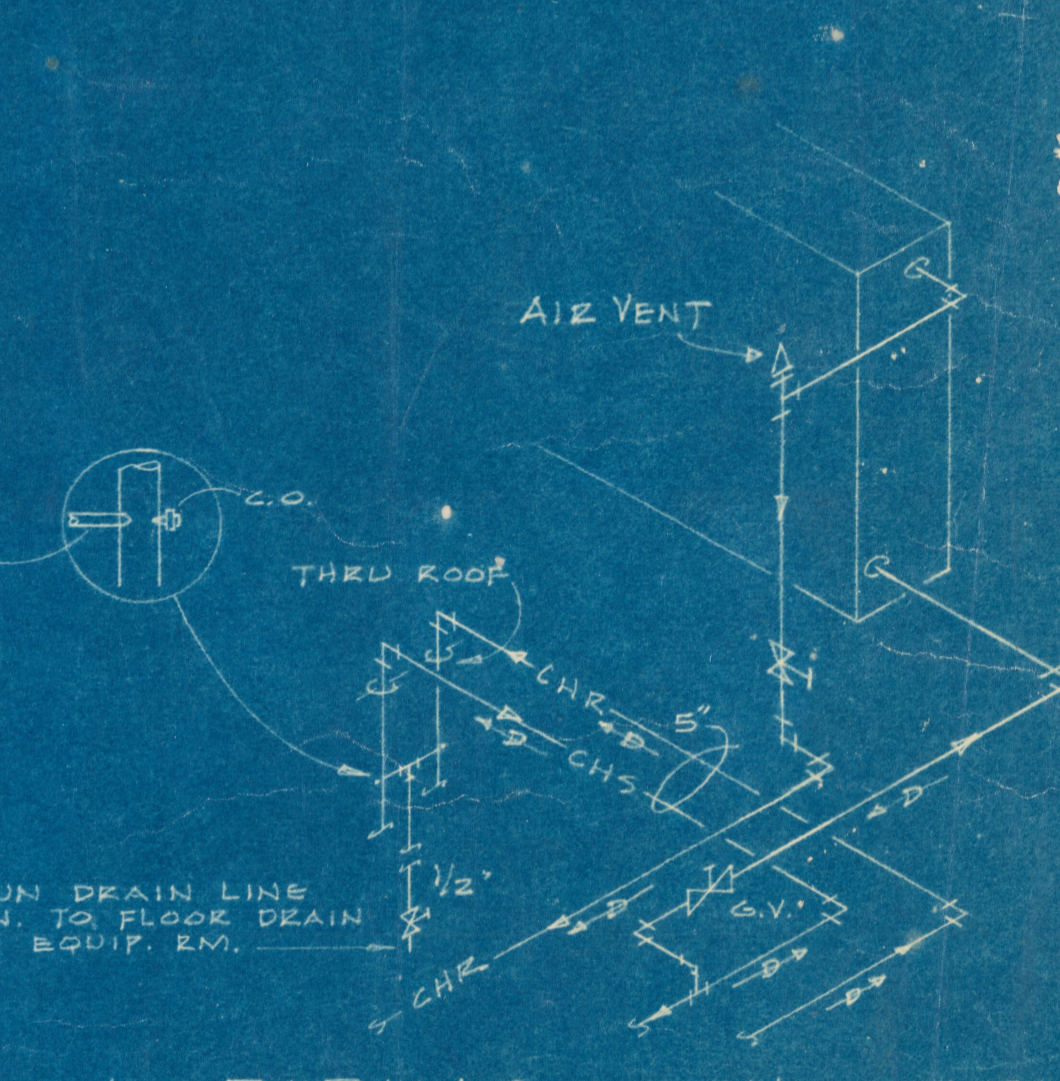
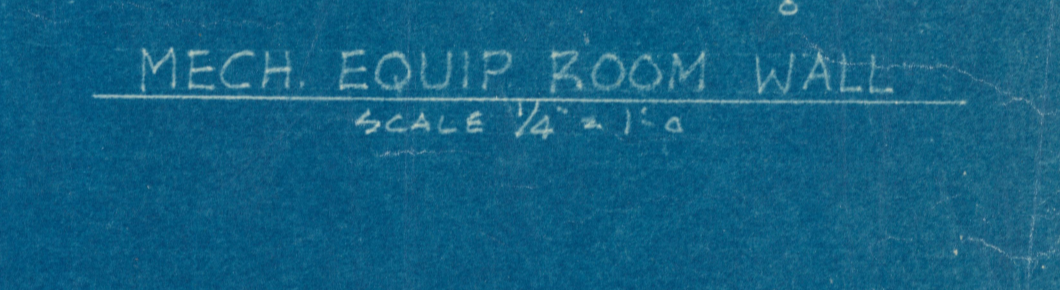
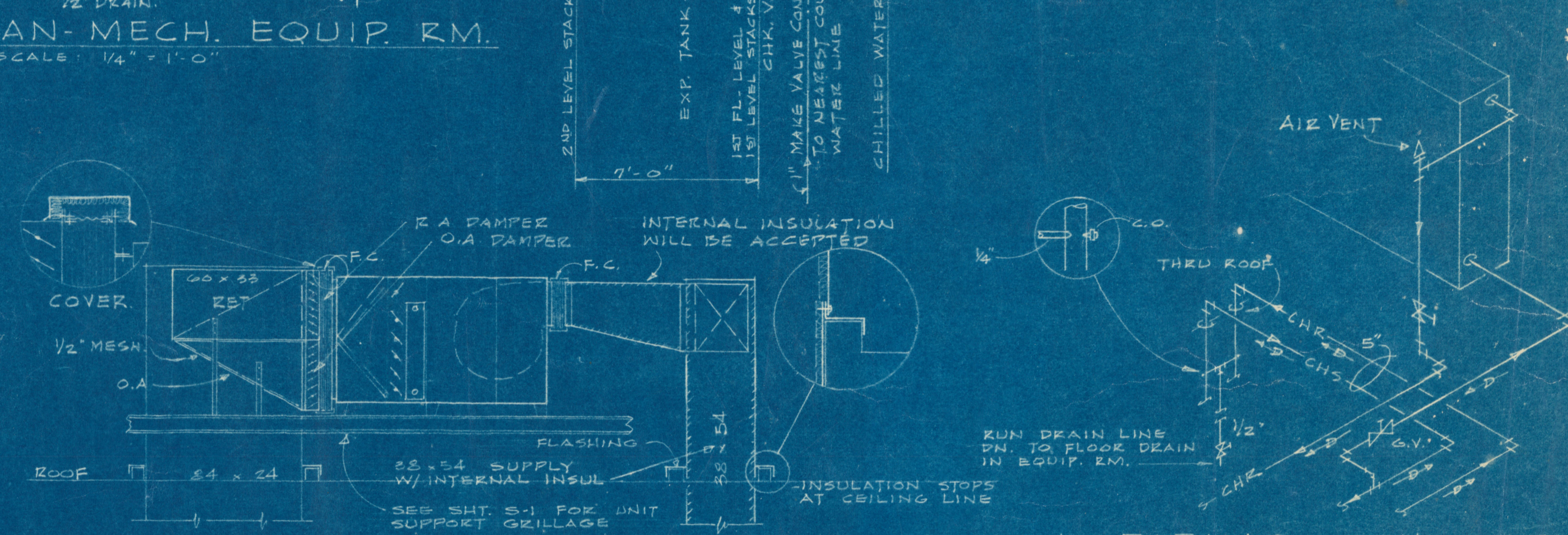
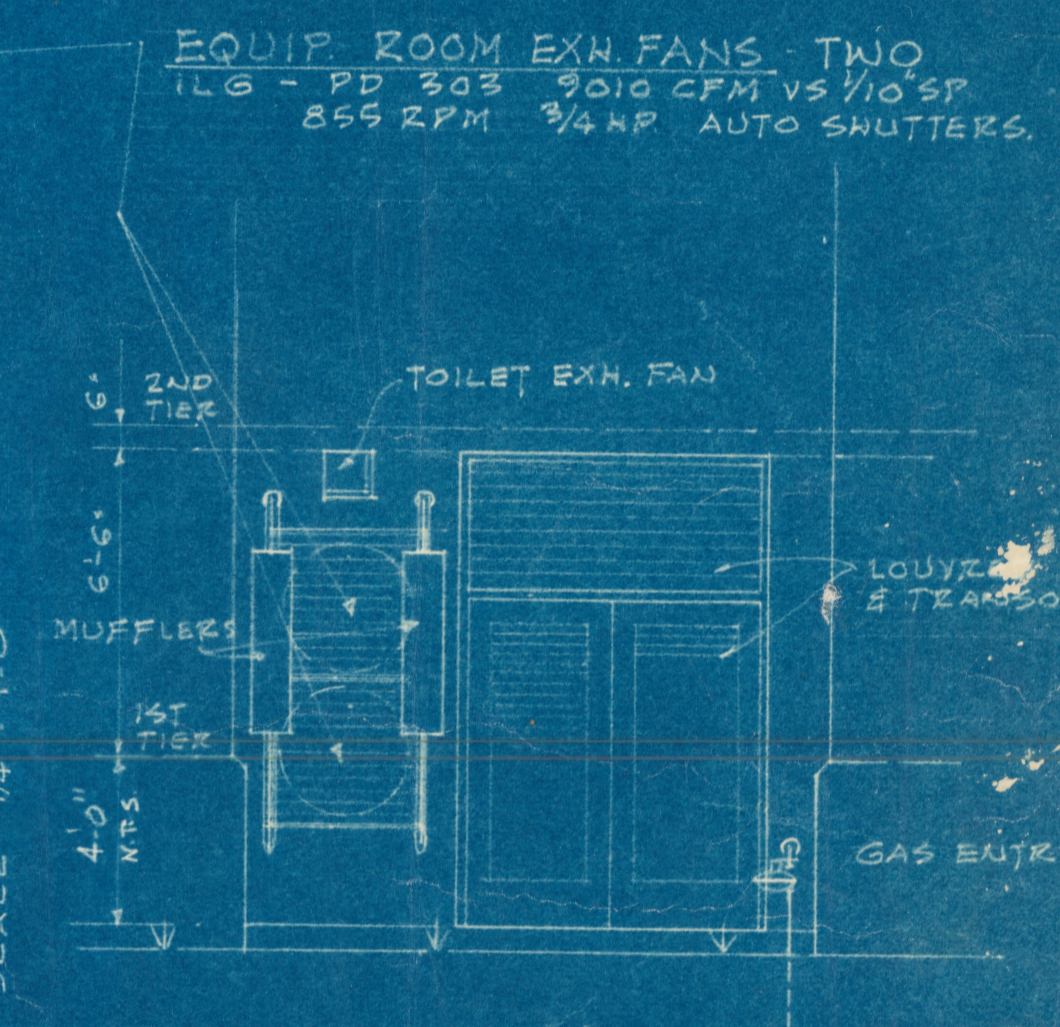
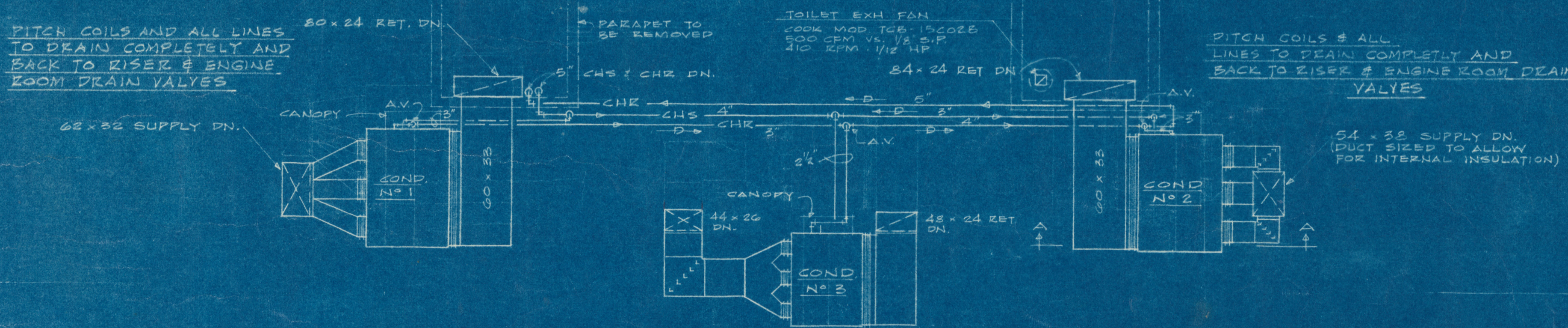


CONDITIONER DATA

No	FAN				Filters	Coil	COIL				MFG. NO. - TYPE						
	CFM	1/4" S.P.	HP	Q.V. RPM			Type	Rows	Area	Ent. Cond.		Lvg. Cond.	GPM	Tons			
1	17,900 vs 1.5"	7.5	1730	640	THRO AWAY	20x25x2	72.9	P	4 (MIN.)	30.8	81.8	68.0	G12	60.0	108	44.8	MARLO CBP HORIZ INT.F.A.B.P.
2	19,200 vs 1.5"	7.5	1845	645	"	20x25x2	72.9	P	4 (MIN.)	30.4	82.4	68.5	G16	60.0	115	48.0	" CBP "
3	8500 vs 1.25"	5	1810	955	"	20x25x2	34.5	P	4 (MIN.)	17	81.4	67.8	G10	59.7	51	21.2	" CBJ "



ADDITION & RENOVATION LIBRARY BUILDING
PROJECT NO. ALA. 4-0361 TUSKEGEE INSTITUTE
TUSKEGEE INSTITUTE, ALABAMA

HEATING, VENTILATING AND AIR CONDITIONING
THIRD FLOOR & ROOF PLANS

MILLER AND ALLAIN, ARCHITECTS
ATLANTA, GEORGIA

REVISIONS

DRAWN BY: []
TRACED BY: []
APPROVED BY: []
ISSUE DATE: 12-10-65
DRAWING NO. M-2