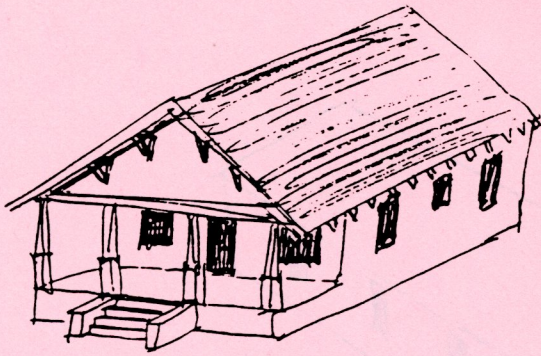
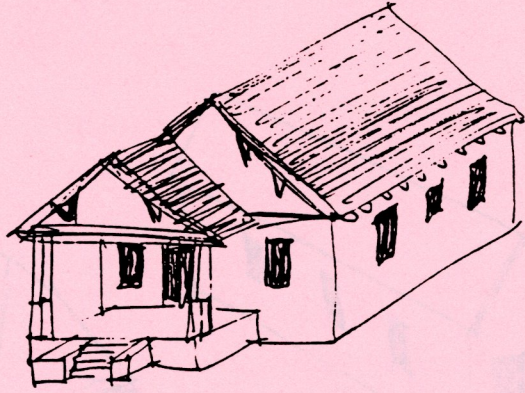


Richard J. Cawthon's, Sketches of House Types
in
The Farish Street Neighborhood Historic District

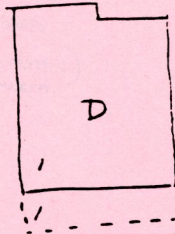


bungalow
with inset porch
(full-width)

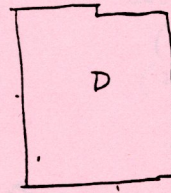


bungalow with
projecting porch

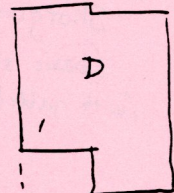
outline plans
as they would appear
on Sanborn Maps



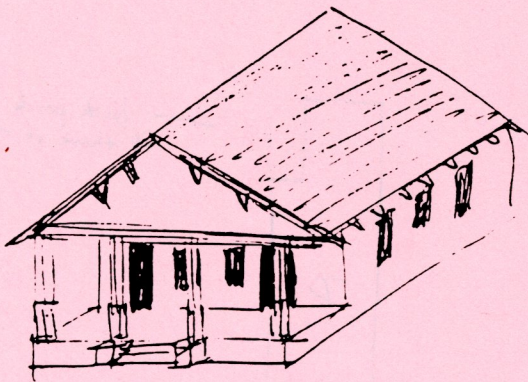
full-width porch



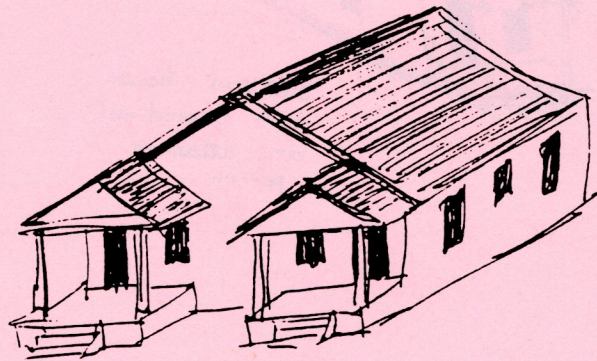
projecting porch



semi-recessed porch

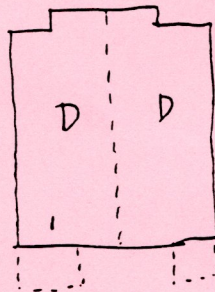
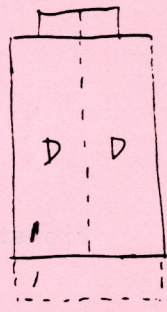


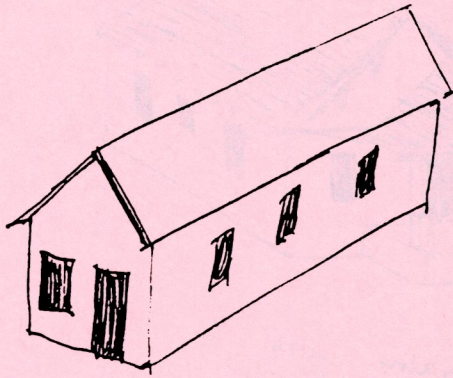
duplex bungalow
("double-shotgun" plan)
with full-width porch



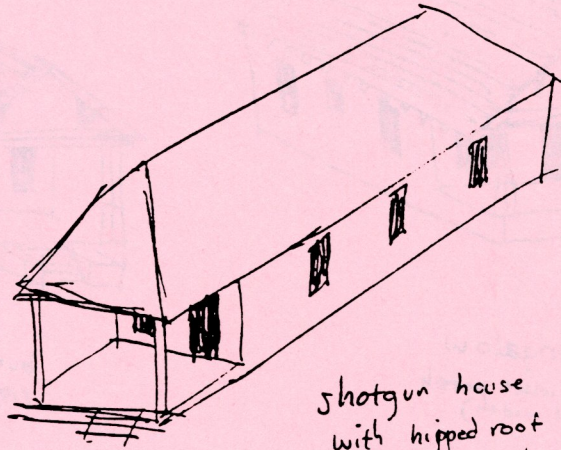
duplex bungalow
("double shotgun" plan)
with two front porches

outline plans
as they would appear
on Sanborn Maps

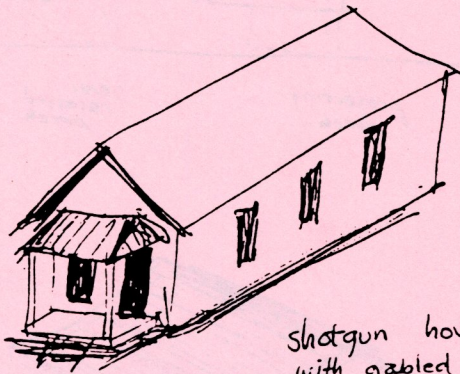




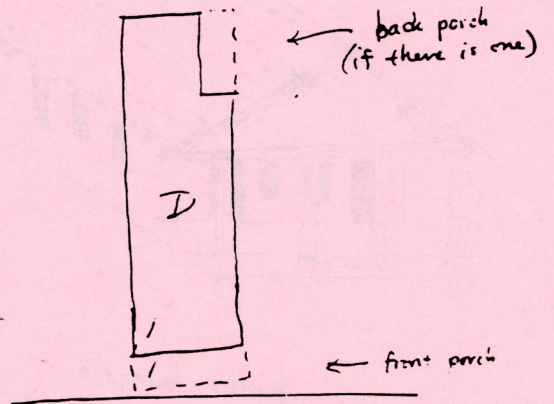
Shotgun house
(basic shape)
(with gabled roof)



shotgun house
with hipped roof
and inset porch
(porch is under the
main roof line)

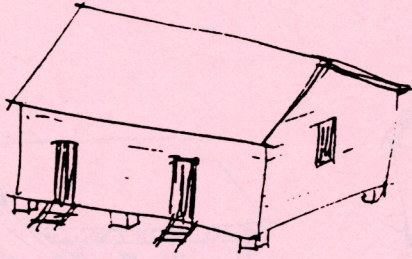


Shotgun house
with gabled roof
and attached
porch

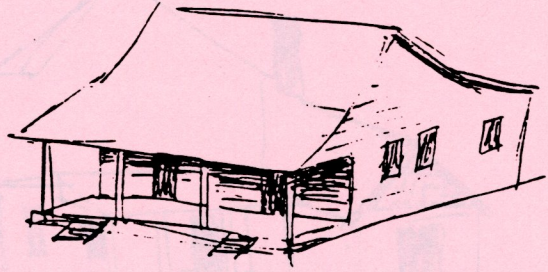


outline plan of a
Shotgun house as it
would appear on a
Sanborn map

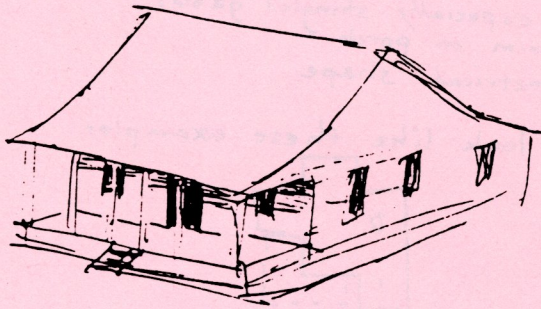
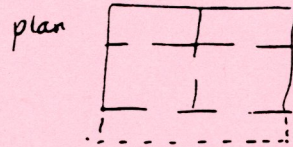
Prepared by: Richard Cowthon
Historical Architectural
Consultant
Miss. Historical Museum



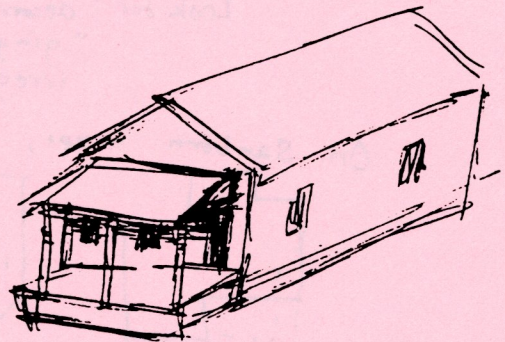
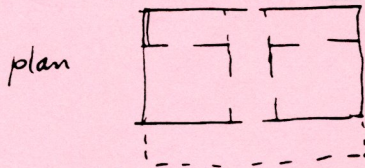
double-pen house
(basic form)



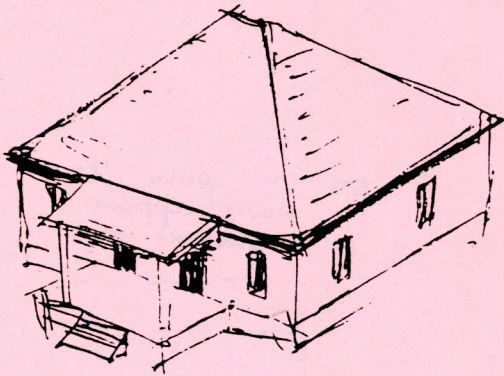
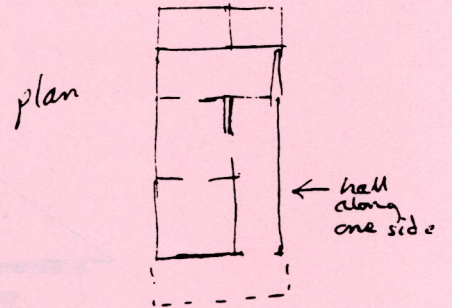
expanded double-pen house



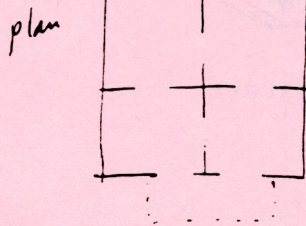
center-hall cottage



side-hall cottage

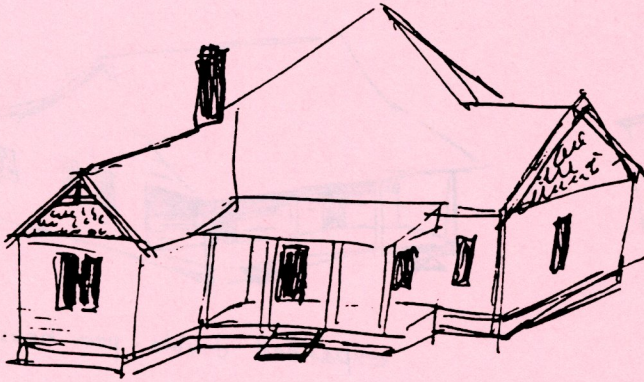


pyramidal cottage



front view

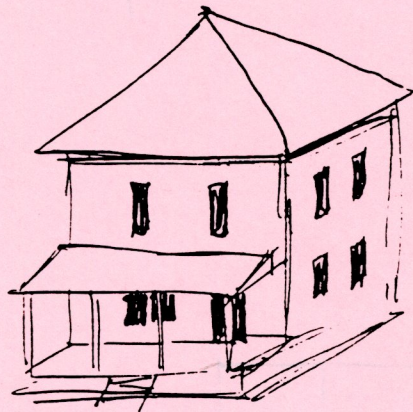
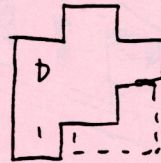
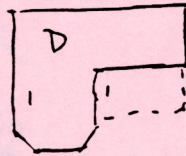
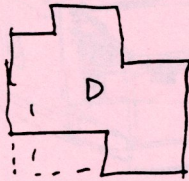




Some Victorian Vernacular Cottages.

Shapes and sizes vary.
 Some may be two stories.
 Look for: decorated gables, especially shingled gables
 "gingerbread" trim on porch
 irregular, asymmetrical shape

On Sanborn maps, they may look like these examples:



"Foursquare"

outline plan as it would appear on a Sanborn map

